

MAY 4, 2017 | MERCY NEIGHBORHOOD MINISTRIES

The second of three public meetings for the North District Plan took place on May 4, 2017 at Mercy Neighborhood Ministries. The meeting attracted approximately 132 attendees to the community center located at 1939 West Venango Street. The meeting was conducted in both English and Spanish. Translation assistance was provided by HACE, Esperanza, Impact Services, and Dept. of Housing Community Development staff. Additional facilitation assistance was provided by Citizens Planning Institute graduates.

This meeting served a dual purpose. The first was to provide an update on the North District planning process – including the Plan’s “big ideas” and a summary of the first public meeting results. The second was to obtain additional community input on plan recommendations and Focus Areas that are proposed to be included in the Plan. Focus Areas are areas where multiple layers of public intervention can come together to create positive momentum and revitalize specific intersections, corridors, or neighborhoods.

As guests entered the meeting, they were asked to provide input and comments on specific topics at a series of stations around the room. This was followed by a presentation that provided an update of the planning process. Finally, Planning Commission staff sat down with guests to engage in two group exercises.

The results of the meeting exercises are summarized on the following pages. The feedback presented here will inform the contents of the draft District Plan. The final public meeting will be held in July 2017.

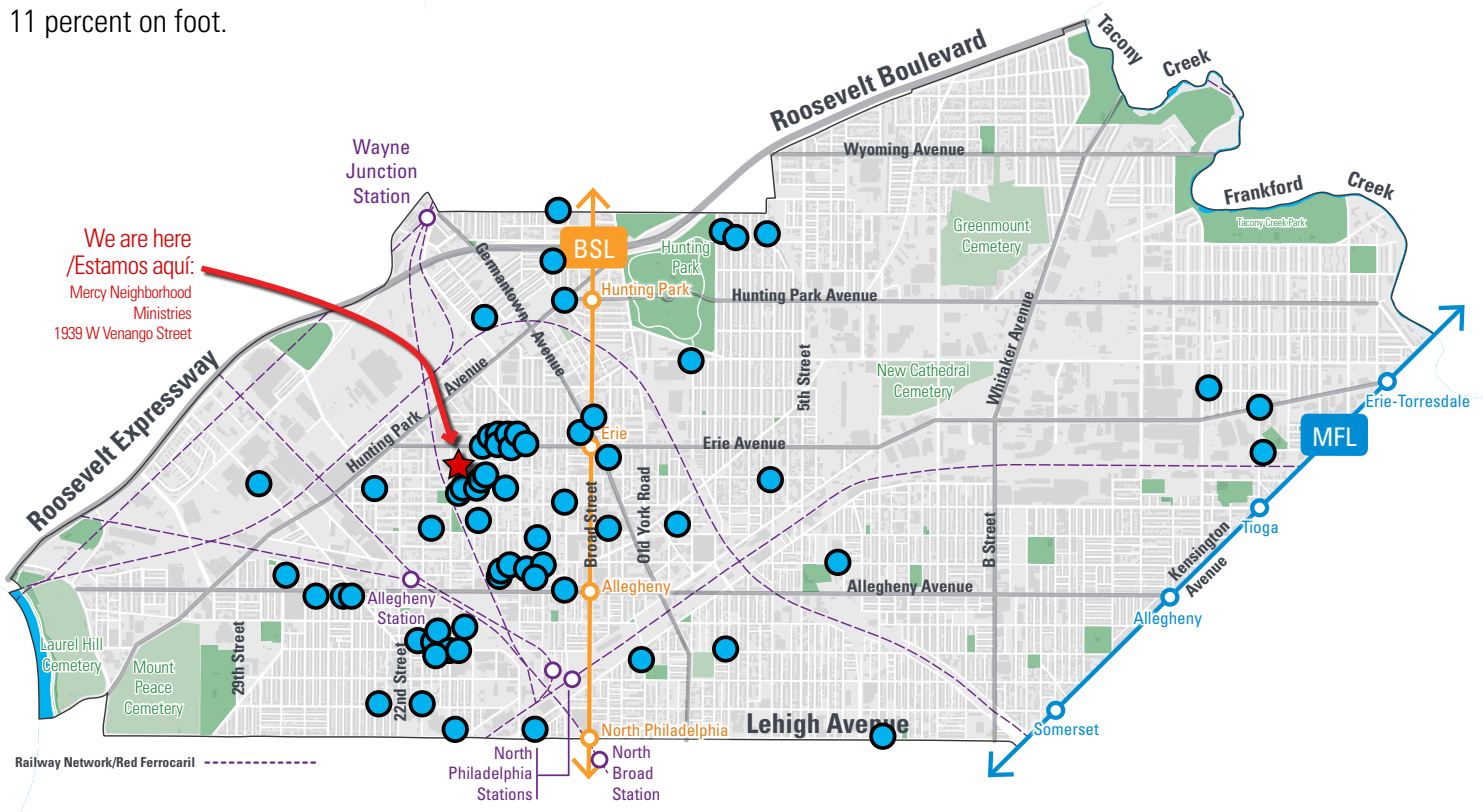
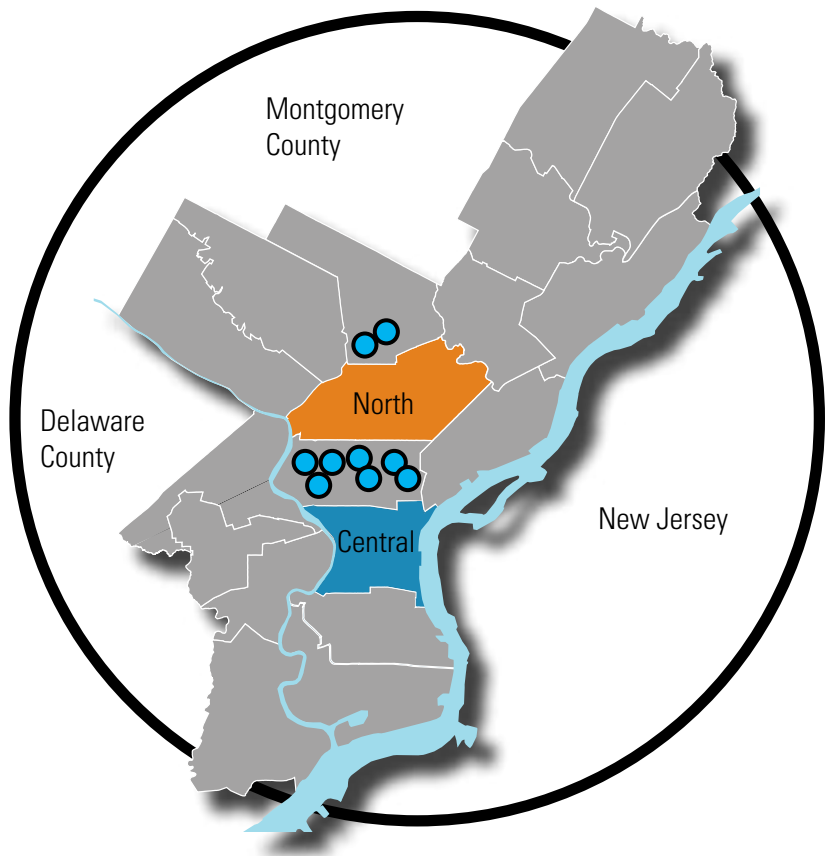


WHERE DO YOU LIVE?

Prior to the North District Plan presentation and the facilitated Group Mapping Exercises, meeting participants were asked to participate in a “Where Do You Live” welcoming exercise. The purpose of this exercise was to assess what areas of the North District participants represented.

Meeting attendees represented many of the District’s neighborhoods. Those directly adjacent to Mercy Neighborhood Ministries were particularly well-represented, such as Swampoodle and Tioga. There was also participant representation from the Nicetown, Hunting Park, Allegheny West, and Kensington neighborhoods. Please note that not all attendees participated in this exercise and therefore it does not reflect all 132 attendees.

Approximately three quarters of attendees arrived by car, 11 percent by public transit, and 11 percent on foot.



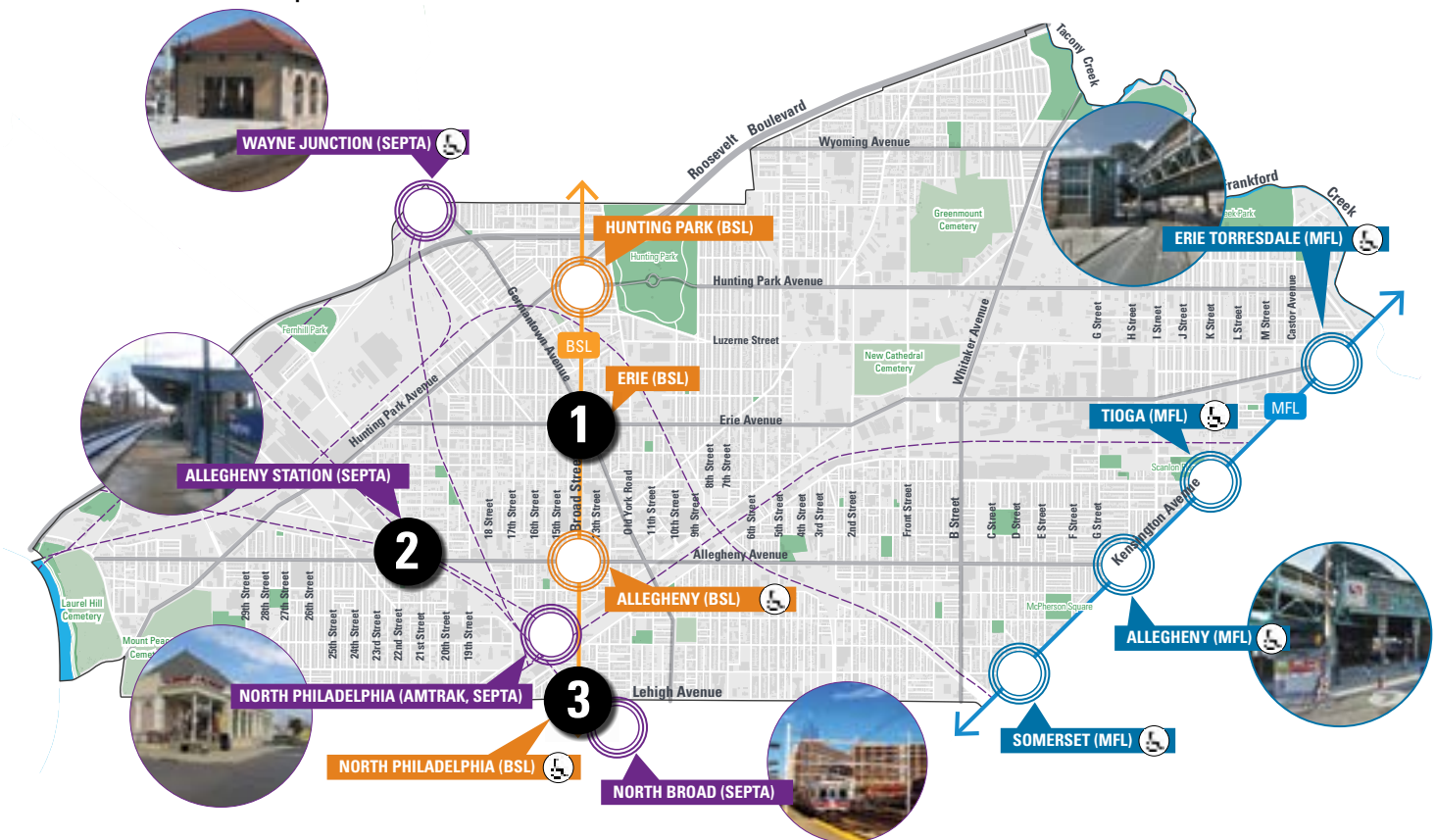
BOARD 1: TRANSPORTATION

Participants were asked to prioritize transit stations in need of improvements including:

- Improved ADA access
- Bicycle amenities
- New bus shelters for transfers
- Lighting
- Additional security

These stations were identified as being in most need of improvement:

1. Erie (Broad Street Line)
2. Allegheny (SEPTA Regional Rail)
3. North Philadelphia (Broad Street Line)



GENERAL COMMENTS

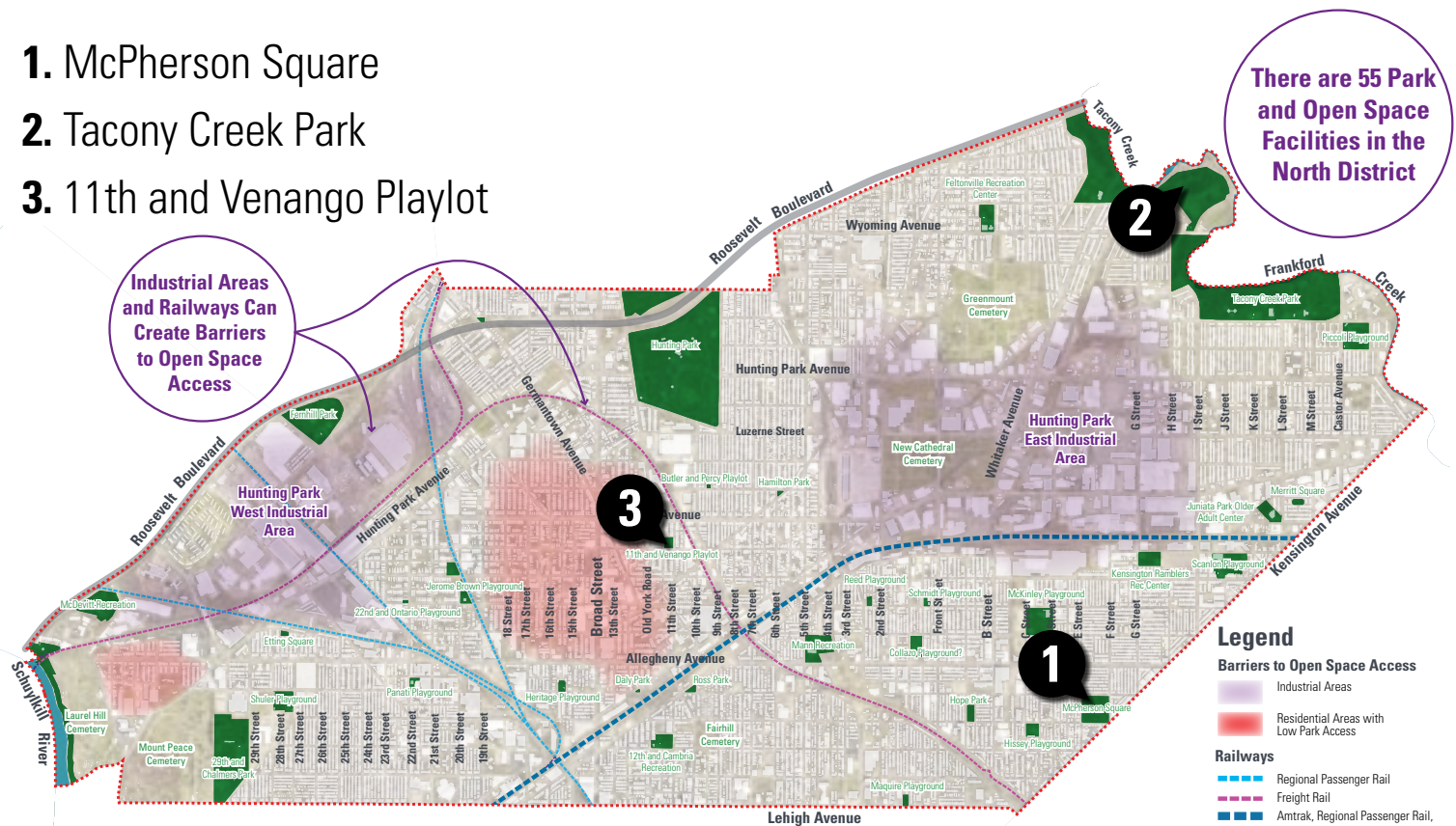
Improve safety, lighting, and ADA access (elevators) at stations
Remove trolley tracks on Erie Avenue

BOARD 2: OPEN SPACE

Participants were asked to prioritize park and open space facilities in need of improvements. In addition, they were asked to identify barriers to park use and whether they would like to have a street tree for their house.

These park and open space facilities were identified as being in most need of improvement:

1. McPherson Square
2. Tacony Creek Park
3. 11th and Venango Playlot



"I would use my neighborhood park much more if...."

- **Cleaner/better maintained**
- **More or better programming**
- **Safer**
- Supervision to prevent dogs/music/crime
- Skateparks
- More passive space
- More indoor/recreation space

Do you want a street tree for your house?

| | | | |
|-----|-----|----|-----|
| YES | 40% | NO | 60% |
|-----|-----|----|-----|

BOARD 3: RAIL RIGHTS-OF-WAY

Another board asked participants to identify major issues along railways, specific locations of major concern, and potential improvements.

The following were the most commonly identified responses:

1. Address issues with the “Encampment” at 2nd Street and Indiana Avenue
2. Redevelop the Budd Site
3. Add lighting to bridges and underpasses



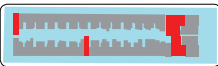
BOARD 4: VACANCY

This board asked participants to share ideas regarding the reuse of vacant land for blocks that have low, moderate, and high vacancy.

The results of this exercise are as follows:

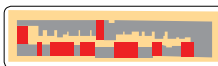
How would you prefer to use vacant land?

Low Vacancy/Stable



Blocks with a few vacant parcels usually as single lot or pairs of lots.
■ Vacant Lots

Moderate Vacancy



Blocks with multiple vacant parcels, usually spread throughout the block.

High Vacancy



Blocks where the majority of parcels are vacant, often in larger groupings that can be consolidated.

Buildings

Infill development and rehabilitation



Image source: nakedphilly.org

64%

Infill development and rehabilitation



31%

Redevelopment, Whole Block

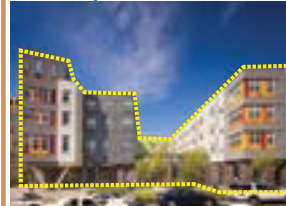


Image source: nakedphilly.org

69%

Open Space/Yards

Sideyards (Private)



14%

Sideyards, Multiple Locations (Private)



21%

Community Open Space (Public)



17%

Community Agriculture

Small Gardens/Social Spaces (Public)



Image Source: PHS Blog

22%

Community Garden (Public)



Image Source: PHS

48%

Large Farm (Private)



Image Source: Greensgrow.org

14%

GENERAL COMMENTS

- Add farm at Tacony Driving Range
- Different neighborhoods need different things
- This exercise needs an option for parking and stormwater projects
- Development should fit neighborhood character
- Develop vacant parcels into affordable housing

BOARD 5: COMMUNITY AGRICULTURE

Participants were asked to share their personal relationship with community agriculture.

The results of this exercise are as follows:

1 Do you garden now?

Yes! I have gardened in the past 2 years.



48%

No, I have not gardened in the past 2 years.



52%

2a Where do you garden?

At home or in a private sideyard

57%

In a community garden or other shared space

43%

2b Do you want to garden?

Yes, at home or in a private sideyard

8%

Yes, in a community garden

44%

I support gardening, but have no time for it.

48%

3 What is your biggest challenge to gardening (or gardening more)?

Access to Land/Space



32%

Access to Water



20%

Access to Materials/Tools



12%

Access to Training/Education



36%

GENERAL COMMENTS

Have space but it does not have the right soil or sun to garden

Not enough people to support a community garden

Safety is a concern

BOARD 6: SENIOR-FRIENDLY NEIGHBORHOODS

Participants were asked to provide opinions regarding the ability of seniors to age in place. These needs help inform recommendations for housing, transportation, and the public realm.

The results of this exercise are as follows:

What amenities make a senior friendly neighborhood?

- **More senior housing**
- **Community Centers**
- **Grocery delivery/close corner store**
- **Intergenerational programming**
- House maintenance help
- Safety/better lighting/security
- Wayfinding
- Prescription/medical access
- ADA accessibility
- Affordable Healthcare
- Benches

Do seniors have good housing options in the District?

If so, what are they?
What makes them good options?

Yes - 33%

No - 67%

Place a dot for the feature which you feel would most support aging in place

| | |
|------------------------------------|------------|
| Senior-focused activities/events | 17% |
| High-quality transit access | 22% |
| Easy walk to everyday destinations | 24% |
| Community Center | 28% |
| Being around other Seniors | 9% |
| Other? | 0% |

BOARD 7: AIR QUALITY & HEALTH

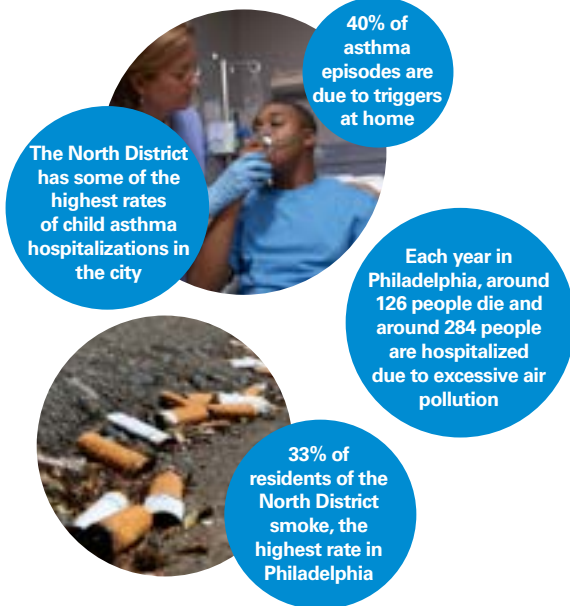
This station asked participants to share their personal experiences with air quality and health issues in the North District.

The results of this exercise are as follows:

1 Does anyone in your family have a respiratory illness?

| YES | NO |
|-----|-----|
| 60% | 40% |

DID YOU KNOW?



2 Which air quality issue are you most concerned about?

| | |
|--|---|
| | INDUSTRIAL POLLUTION 27% |
| | CAR EXHAUST 36% |
| | INDOOR AIR 21% <small>mold, dust, lead paint, asbestos, etc.</small> |
| | TRUCK EXHAUST 5% |
| | TOBACCO SMOKE 11% |

3 What changes would you like to see to improve air quality?

| | |
|---|--|
| Trees and plants 19% | Air quality monitoring stations near factories 9% |
| Help renovating older homes 28% | Managing truck traffic and idling 7% |
| Improved pedestrian and bike routes 7% | Smoking restrictions in multi-family and affordable housing developments 12% |
| Reduce tobacco advertising around schools and parks 18% | Other |

GENERAL COMMENTS

Swampoodle: stop tree vandalism, more tax money to reduce micro trash in air streams
Crematorium behind 39th district on Hunting Park Avenue is making people sick
Trees were cut down on Hunting Park Avenue and need to be replaced
Stop sale of alcohol on Sundays

TABLE EXERCISE: HUNTING PARK EAST FOCUS AREA

Following the presentation, guests worked together in groups with Planning Commission staff and volunteers to provide input on recommendations for the Hunting Park East Focus Area.

In the first part of this exercise, participants noted which improvements they would like to see within this Focus Area. They were given two choices in prioritizing eight different improvements.

The results are as follows:

Improve Industrial Edges



8%

Reuse Abandoned Rail Right-of-Way



13%

Create a Gateway into the Area



4%

Attract New Businesses and Unify Character



29%

Improve Sidewalk Condition and Greening



18%

Increase Bike Safety/Trolley Track Removal



5%

Increase Pedestrian Safety



13%

Improve Truck Traffic Flow and Parking



10%

TABLE EXERCISE: HUNTING PARK EAST FOCUS AREA

The second part of the Hunting Park East exercise asked participants to share what other improvements need to be made of the area.

The following is a list of general comments about this Focus Area:

- **Adaptive reuse/phase out industry**
- **Better access/ped safety around Lighthouse Field**
 - **Complete street on Erie Avenue**
 - **Truck traffic on 2nd street**
 - **Need more parks**
 - **Add bus shelters/improve existing bus stops**
 - **Coca-Cola Refreshments site has traffic problems**
 - **Potholes/repaving throughout**
 - **Drugs/crime**
 - Indego bike share
 - Green medians and islands
 - Complete street on Hunting Park Avenue
 - Zone for food for employee lunches
 - Replace bridge at Roberto Clemente Middle School
 - Complete street on Whittaker Avenue
 - Priority job site at 2nd and Luzerne Streets
 - Partnership between schools and police and companies
 - Schools are overcrowded/need improvement
 - Lighting on 2nd Street
 - Bring back the trolley
 - Upkeep cemetery
 - Complete street on Luzerne Street
 - Street cleaning in Juniata neighborhood
 - Add artists live/work space
 - Better security on abandoned rail lines
 - Add vocational school
 - Need safety/greening around schools
 - Create jobs without gentrifying the area
 - Lighting on Erie Avenue
 - Control truck parking
 - More frequent 56 bus service
 - Require screening for junkyards
 - Add stormwater management
 - Tree care program to train formerly incarcerated individuals

TABLE EXERCISE: NORTH PHILADELPHIA STATION FOCUS AREA

For the second table exercise, guests worked together in groups with Planning Commission staff and volunteers to provide input on recommendations for the North Philadelphia Station Focus Area.

The first part of this exercise sought to solicit feedback on the types of land uses that are preferred around the station, particularly on vacant land. These uses fall under the categories of Residential, Commercial, or Industrial. Participants were provided the opportunity to pick any one use, any combination of two uses, or all three uses.

The results of this exercise are as follows – a mix of all three uses was the most preferred and a strong majority see industrial uses in all or part of the redevelopment:

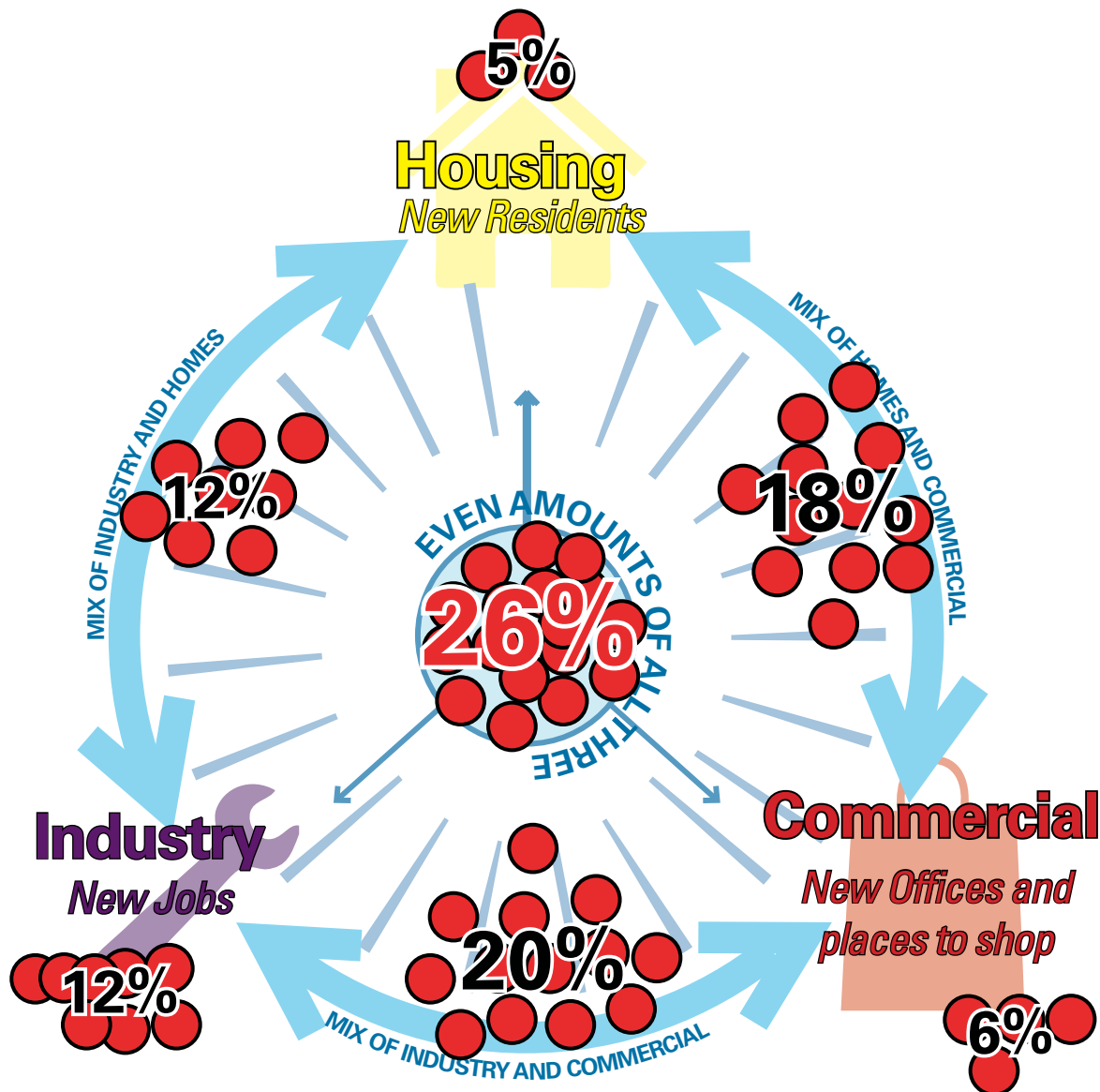


TABLE EXERCISE: NORTH PHILADELPHIA STATION FOCUS AREA

The second part of the North Philadelphia Station exercise aimed to establish priorities for public improvements. Using stickers, participants collaborated to identify specific locations for streetscape, intersection and safety, open space, bus stop, and art and signage improvements. Overall, there was little consensus among the tables.

The following map is an amalgamation of this input:

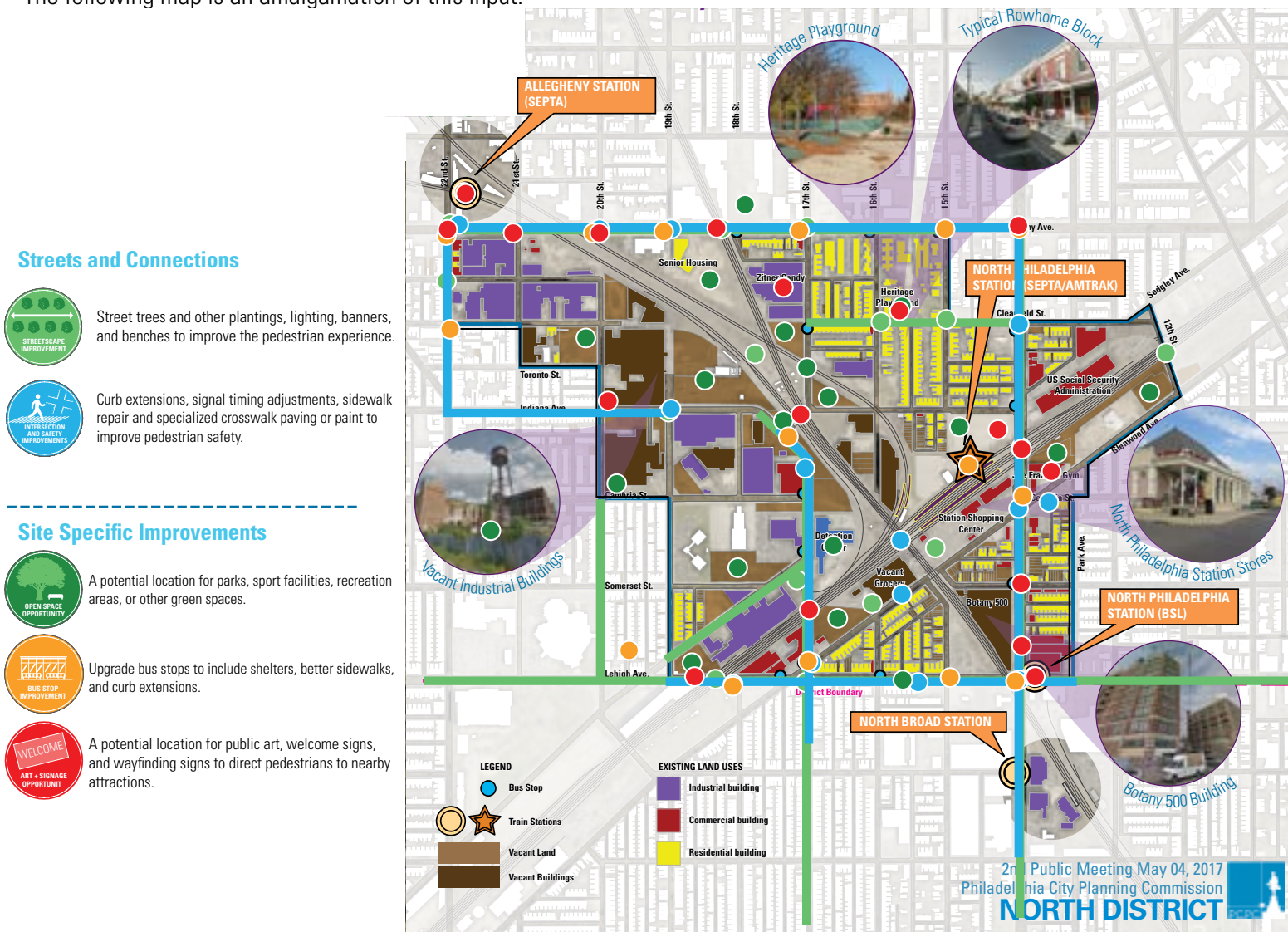


TABLE EXERCISE: NORTH PHILADELPHIA STATION FOCUS AREA

The following is a summary of preferred locations for individual improvements:

Streets and Connections



Street trees and other plantings, lighting, banners, and benches to improve the pedestrian experience.

- Clearfield Street (Broad to 17th)
- Broad Street (extent of Focus Area)
- Lehigh Avenue (extent of Focus Area)
- 17th Street (York to Indiana)
- 20th Street (Lehigh to Indiana)
- Sedgley Avenue (Lehigh to 17th)



Curb extensions, signal timing adjustments, sidewalk repair and specialized crosswalk paving or paint to improve pedestrian safety.

- Broad Street (extent of Focus Area)
- Lehigh Avenue (Park to 19th)
- Allegheny Avenue (Broad to 22nd)
- 17th Street (York to Indiana)
- 22nd Street (Indiana to Allegheny)
- Indiana Avenue (19th to 22nd)

Site Specific Improvements



A potential location for parks, sport facilities, recreation areas, or other green spaces.

- Generally, vacant and underutilized lots along railroad



Upgrade bus stops to include shelters, better sidewalks, and curb extensions.

- Generally, serving bus routes along Broad Street, Lehigh Avenue, Allegheny Avenue, and 17th Street



A potential location for public art, welcome signs, and wayfinding signs to direct pedestrians to nearby attractions.

- Allegheny Station
- Multiple locations along Allegheny Avenue (including Broad & Allegheny)
- Multiple locations around Broad and Glenwood (including railroad bridge over Broad and Joe Frazier's Gym)
- Multiple locations around Broad & Lehigh

TABLE EXERCISE: NORTH PHILADELPHIA STATION FOCUS AREA

The following is a list of general comments about this Focus Area:

- **Make Joe Frazier Gym a landmark**
- **Concern for gentrification/taxes/outsideers**
- **Need well-paying jobs**
- **Add a recreation center**
- **Should have destination commercial**
 - **Need better police/security**
 - **Provide programs for homeowners for upkeep older homes**
 - **Involve community in development**
 - **Grocery store a priority**
 - **Lighting/security underpasses**
 - Indego bike share stations
 - Bike lanes on Allegheny
 - More trash cans near stations
 - Need job training
 - Improve Heritage Playground
 - Drugs at Heritage Playground
 - Traffic light at 17th and Clearfield Streets
 - Skate park
 - Regional rail service to North Philadelphia station (Amtrak/Septa)
 - No fast food
 - New bus stop at Carlisle and Erie Avenues
 - Loft conversion to new uses
 - Want vertical farm/urban agriculture
 - Concern with street trees affecting sidewalks and pipes
 - Add a recreation center
 - Include green/ sustainability/stormwater in development
 - Apply for EPA cleanup at Toronto and 20th Streets

APPENDIX OF COMMENTS

In addition to feedback received through the map exercises, participants also shared their planning ideas about the North District on a separate board that discussed various topics, including Health and Activity, Employment, Public facilities, Vacancy, and General Comments.

Comments from participants included:

- Need for living wage job creation
- Identify funding sources to spur economic development, i.e. grants from the Community Design Collaborative to revitalize storefronts
- Address shortdumping beneath rail overpasses, 20th and Tioga, abandoned rail line in Hunting Park
- Major concerns with recent school closures and how open schools are overcrowded and children must walk further to reach them. Less focus on commercial and more on education.
- Better, high quality schools are needed
- Community centers for all ages are needed, not just seniors
- Need public restrooms
- Better traffic signage
- Speeding occurs along the Roosevelt Boulevard, Whitaker Ave, B Street, Erie Ave, 2nd St, 5th Street, and Broad Street
- Traffic jams on Erie Avenue
- 4-way stop needed at G and Luzerne
- Traffic issues at Broad & Erie
- Abandoned football field on Clarissa Street needs to be cleaned up
- Improve maintenance of public space, especially weeds in sidewalks
- Forgotten blocks between 18th and 20th and Lehigh and Cambria need attention
- More/better libraries are needed
- It's difficult to acquire financing for mixed-use development projects
- Historic vacant housing should be rehabbed instead of demolished
- There are no incentives for builders to come into the area, need banks to lend
- PIDC and the Commerce Department need better communication with the public
- Funding programs are needed to improve Germantown Avenue commercial corridor
- Will there be development pressure from Fishtown?
- There is a lack of affordable healthcare
- Asthma and mental health/trauma are serious health issues
- More street sweeping is needed

