

Central Northeast District Second Public Meeting Summary

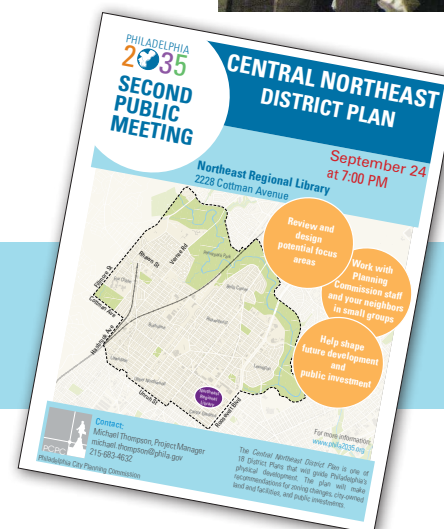
The second community meeting for the Central Northeast (CNE) District Plan of the *Philadelphia2035* Comprehensive Plan was held on September 24, 2013 at the Central Northeast Regional Library. Over forty participants attended the meeting, which started with a CNE District Plan Process update. There were two engagement exercises designed to review potential "Focus Areas" identified during the 1st public meeting. Community members reviewed existing conditions and aerial photos for the "Fox Chase Town Center" and the "Five Points / War Memorial" intersection and were asked to prioritize pedestrian, vehicle, and transit concerns for these areas. Community members then engaged in a game to envision future development and public realm improvements for the Cottman and the Boulevard Shopping Center area.

Thank you to all who participated. Public input provides the Central Northeast district plan team with insight to help shape recommendations which are then prepared and presented at the next public meeting.

The next public meeting will be scheduled for mid-November (before Thanksgiving) and will be an open-house where the community is invited to review and comment on a draft of the district plan.

Please follow the progress of the Central Northeast district on our web page at www.Phila2035.org.

Mike Thompson
Project Manager
215-683-4632
Michael.Thompson@phila.gov



September 24, 2013

Northeast Regional Library

PHILADELPHIA
2035

Philadelphia City Planning Commission

DEFINING PRIORITIES > Fox Chase Town Center

Opportunity to increase density and walkability around Fox Chase Station

What are YOUR Priorities?



Fox Chase Regional Rail Station Area

Choose 1:

Increase train station parking (i.e. new parking garage)	7%
Improve pedestrian access to station from Oxford Ave, Rhawn St, and Rockwell Ave (including installing sidewalks on Oxford)	67%
Install wayfinding signage to nearby attractions	26%



Bus Turn Around Area

Choose 1:

Improve or increase retail services near bus turn around	25%
Relocate and integrate the bus turn around with the train station, and then extending the existing green space	67%
Integrate private shuttles (i.e. Fox Chase Cancer Center Shuttle) with SEPTA bus stops	8%



Rhawn Street Streetscape

Choose 1:

Improve streetscape along Rhawn Street from train station to Oxford Ave	17%
Improve or increase retail services along Rhawn Street	11%
Continue work on proposed Lorimer trail (includes relocating bike racks)	72%

DEFINING PRIORITIES > Five Points

Opportunity to connect transit to the historic commercial corridor of Rising Sun Avenue

What are YOUR Priorities?



**Ryers Station and
Cottman Avenue**

Choose 1:

Increase parking at Ryers Station (i.e. redesign lot and/or find dedicated space nearby)	13%
Explore bike connections to Ryers Station over CSX tracks	19%
Improve streetscape along Cottman Avenue from Oxford Avenue to Ryers Station	68%



**Memorial
Intersection**

Choose 1:

Improve pedestrian safety through building design, crosswalks, traffic signal improvements	45%
Relocate, consolidate, and/or improve bus stops around intersection	33%
Public realm improvements around the memorial (i.e. lighting, plantings, benches, crosswalks)	22%



**Rising Sun
Avenue**

Choose 1:

Expand <i>Transit First</i> program to Rising Sun Avenue (signal prioritization, stop consolidation)	35%
Improve streetscape along Rising Sun Avenue (i.e. preservation of mid-century modern storefronts)	47%
Establish and promote compliance with new guidelines for attractive signs	18%

Visioning: Cottman & the Boulevard Shopping Center

Three groups of neighbors and planning commission staff considered ways to redesign the Cottman and the Boulevard District Shopping Center. Game pieces for the interior of the shopping center included: new commercial and mixed use buildings of various sizes, pedestrian walkways, new through-streets, and parks. Game pieces along the public right-of-way around site included: streetscape improvements, intersection improvements and improved transit stops.

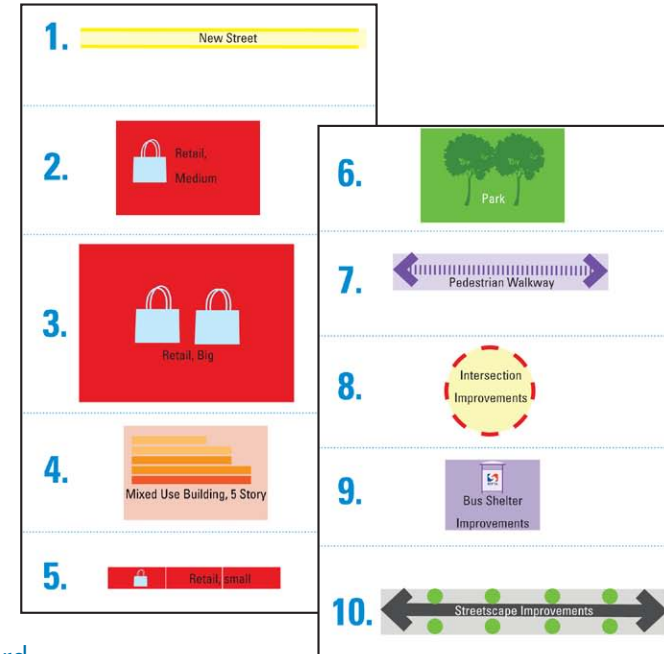
All groups suggested interior site improvements that included:

- A new park;
- Mixed-use 5 story buildings;
- New medium- and small-scale commercial buildings;
- A new street extending and reconnecting Horrocks Street from Cottman Avenue to Bleigh Street;
- Pedestrian walkways connecting Cottman and Bustleton Avenues to the shopping centers; and
- Pedestrian walkways connecting stores within the shopping centers.

All groups suggested exterior site improvements that included:

- Streetscape improvements along Cottman Avenue;
- Improved transit shelters at Bustleton and Cottman Avenues and at Cottman Avenue and the Boulevard; and
- Pedestrian intersection improvements in front of Health Center 10 and major entrances to the shopping centers.

Game Pieces



Game Board

